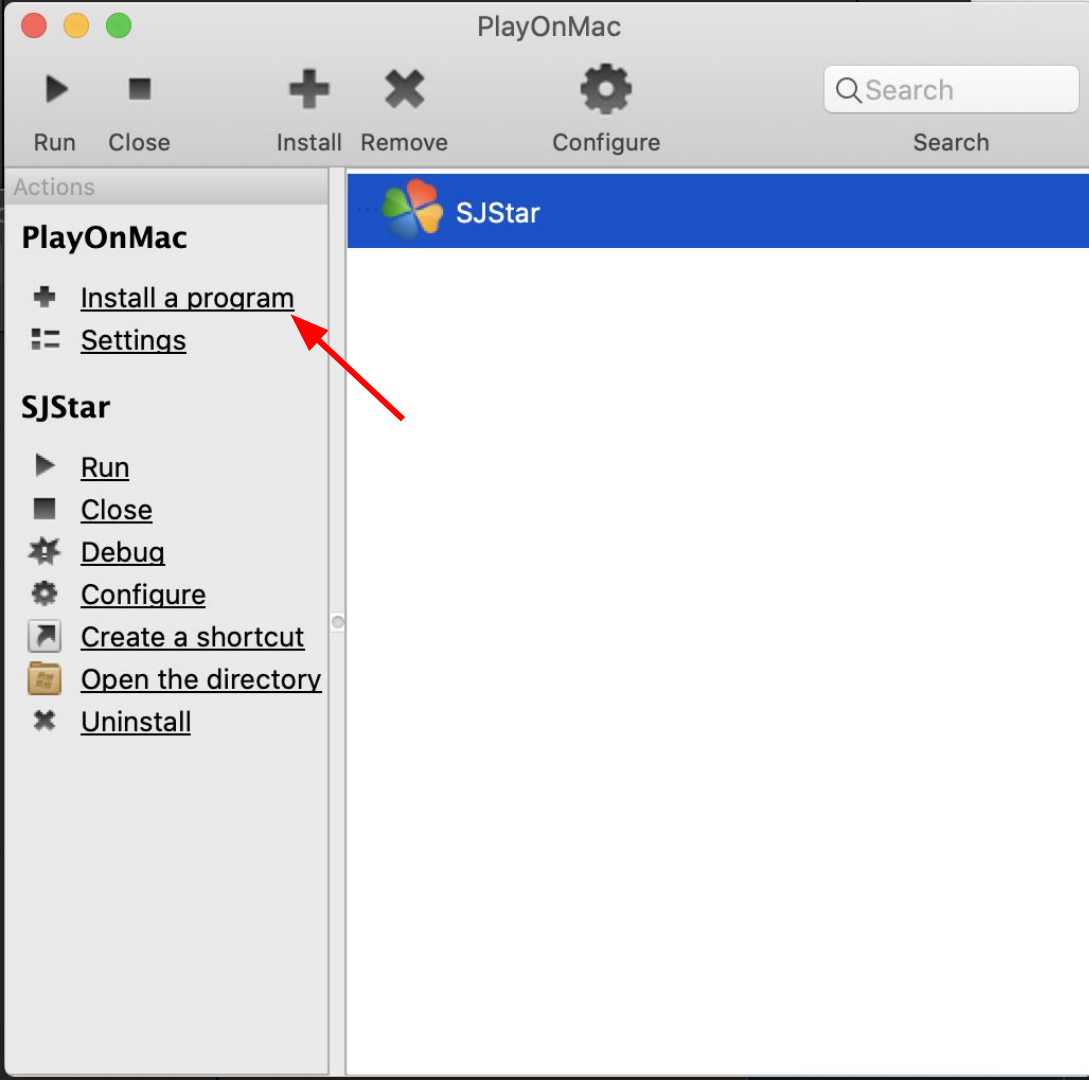
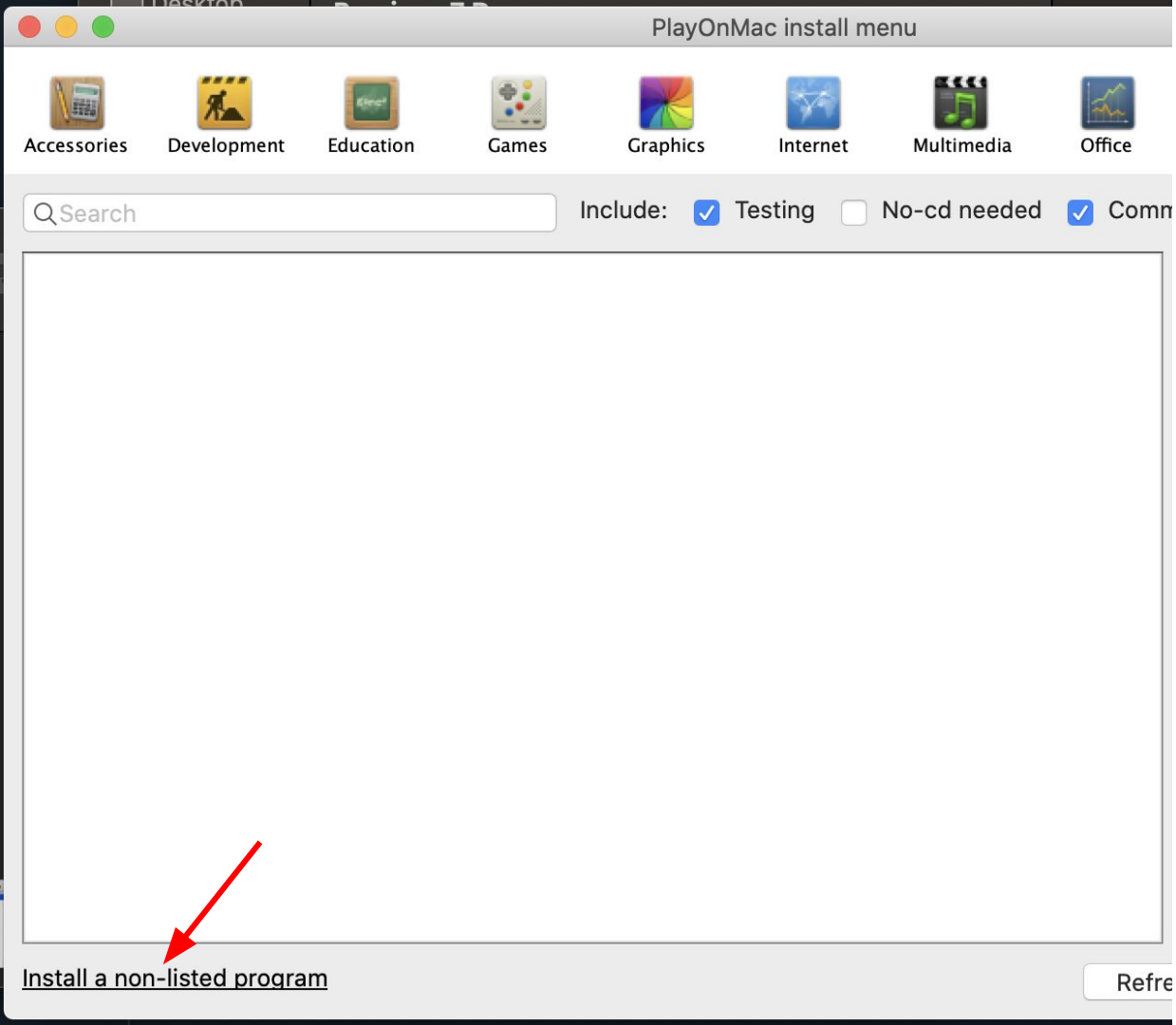


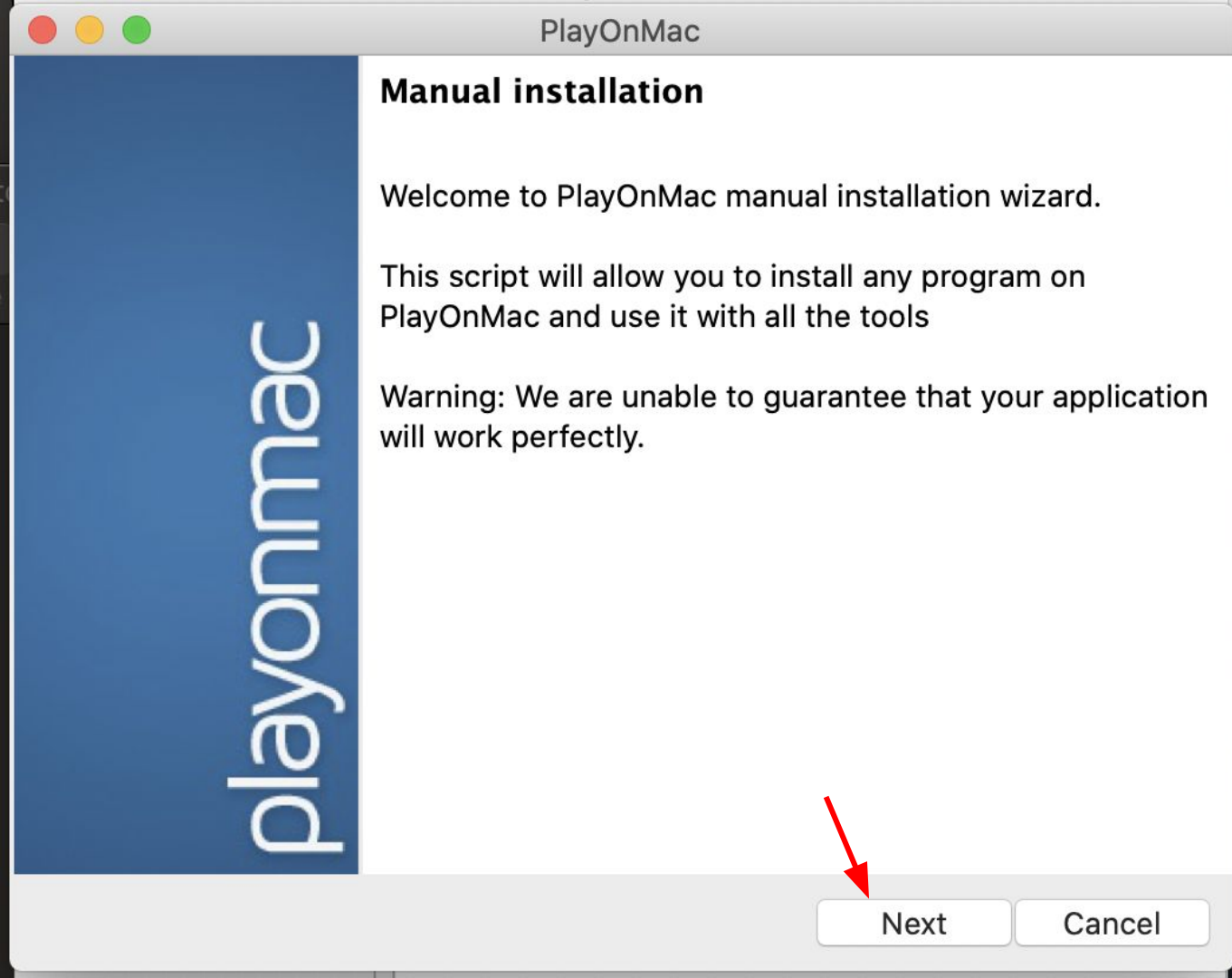
1. First, download your copy of the Shri Jyoti Star app. You should receive a .msi file. Note the location of the file on your computer.
2. [Download the PlayOnMac app](#) from their website. If you are [using macOS Catalina v10.15](#), make sure you [download PlayOnMac 4.4 or greater](#).
3. After pressing the download button, open the PlayOnMac_x.x.x.dmg file in your Downloads folder.
4. In the window that opens, drag the PlayOnMac app to the Applications folder. Now the PlayOnMac app is installed.



1. Click "Install a program" on the left-hand sidebar.



1. A “PlayOnMac install menu” dialog will open. Click on “Install a non-listed program” on the bottom-left corner.



1. A new dialog for manual installation will open. Click on "Next" in the bottom-right corner.

PlayOnMac Wizard

Manual installation



What would you like to do?

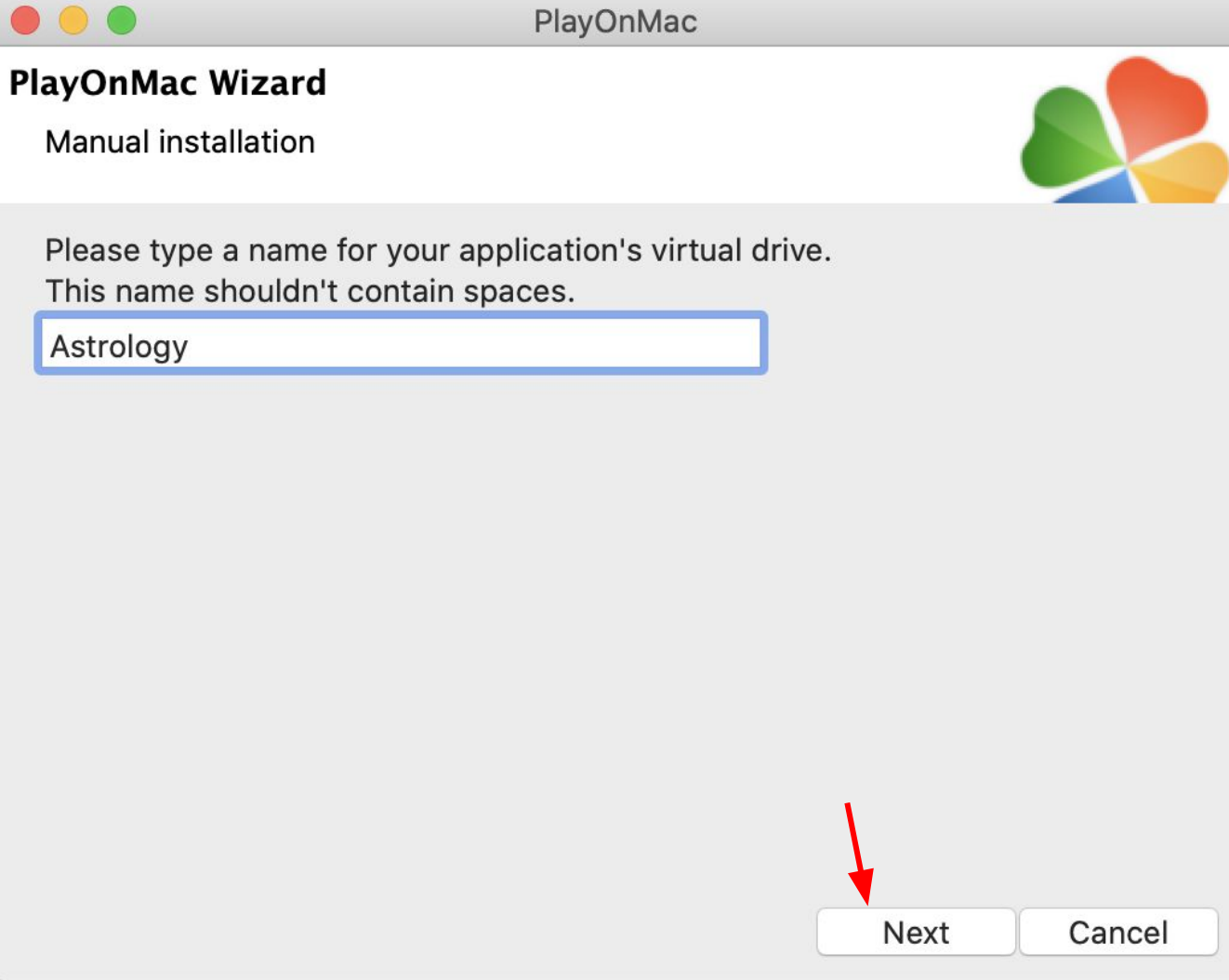
Install a program in a new virtual drive

Edit or update an existing application

Next

Cancel

1. Select “Install a program in a new virtual drive”.
2. Then, click “Next” in the bottom-right corner.



1. Enter a name for your virtual drive. This can be anything as long as it's not the same as any other PlayOnMac drives you have created.
2. Then, click on "Next" in the bottom-right corner.



PlayOnMac Wizard

Manual installation



What would you like to do before installation?

If you don't know, unselect all

- ☐ Use another version of Wine
- ☐ Configure Wine
- ☐ Install some libraries



Next

Cancel

1. Leave all of the options unchecked.
2. Click on "Next" in the bottom-right corner.



PlayOnMac Wizard

Manual installation



What kind of virtual drive do you want to create

32 bits windows installation

64 bits windows installation



Next

Cancel

1. Select the “64 bits windows installation” option.
2. Click on “Next” in the bottom-right corner.

PlayOnMac Wizard

Manual installation



Please wait while the virtual drive is being created...

Wine

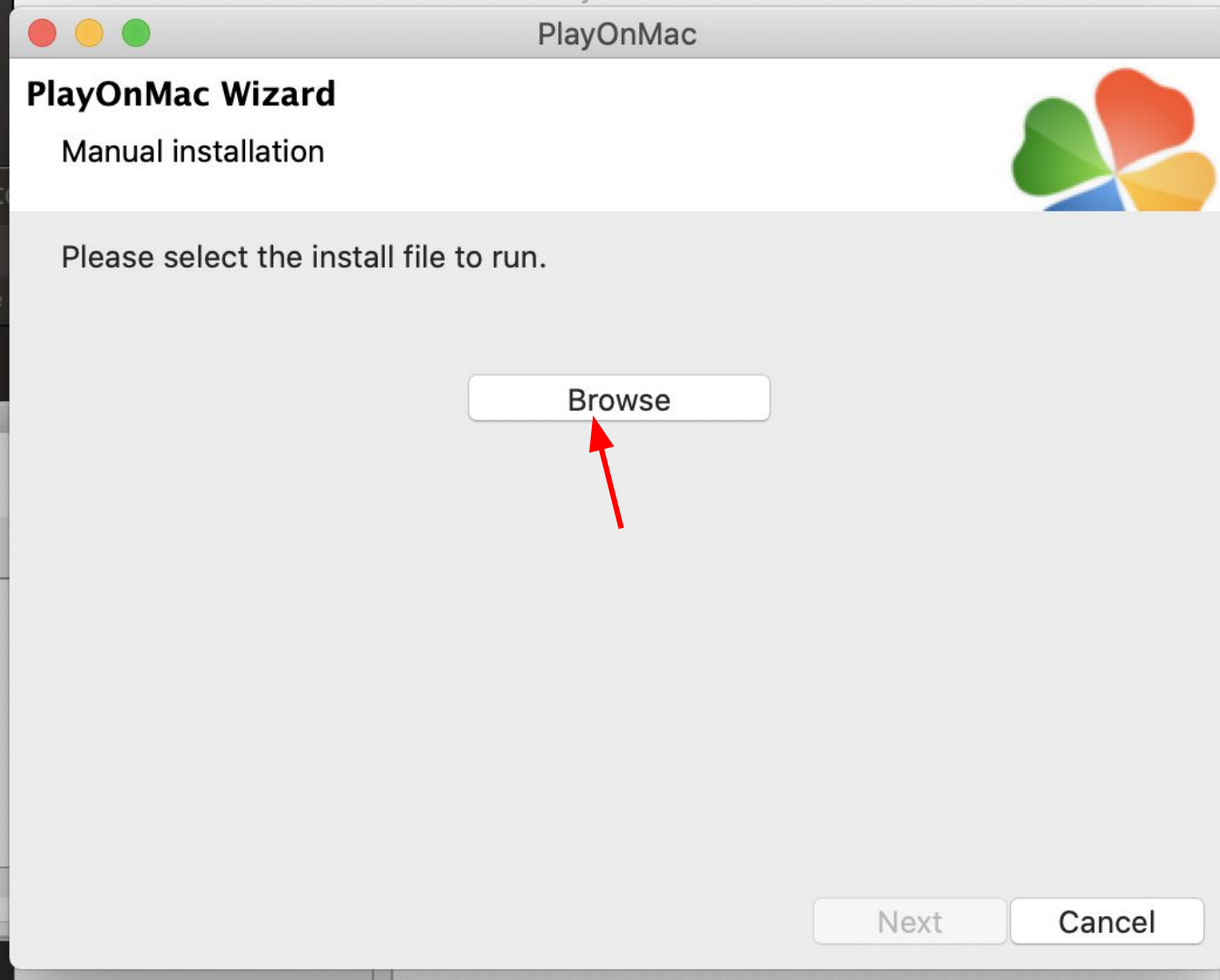
The Wine configuration in /Users/skukkapalli/Library/PlayOnMac//wineprefix/Astrology is being updated, please wait...



Next

Cancel

1. Wait for the virtual drive to be created.



1. Click on "Browse" and select your Shri Jyoti Star .msi file.

Shri Jyoti Star 9 Pro Setup

Welcome to Shri Jyoti Star 9 Pro Setup Wizard

The Setup Wizard will install Shri Jyoti Star 9 Pro on your computer. Click Next to continue or Cancel to exit the Setup Wizard.

< Back

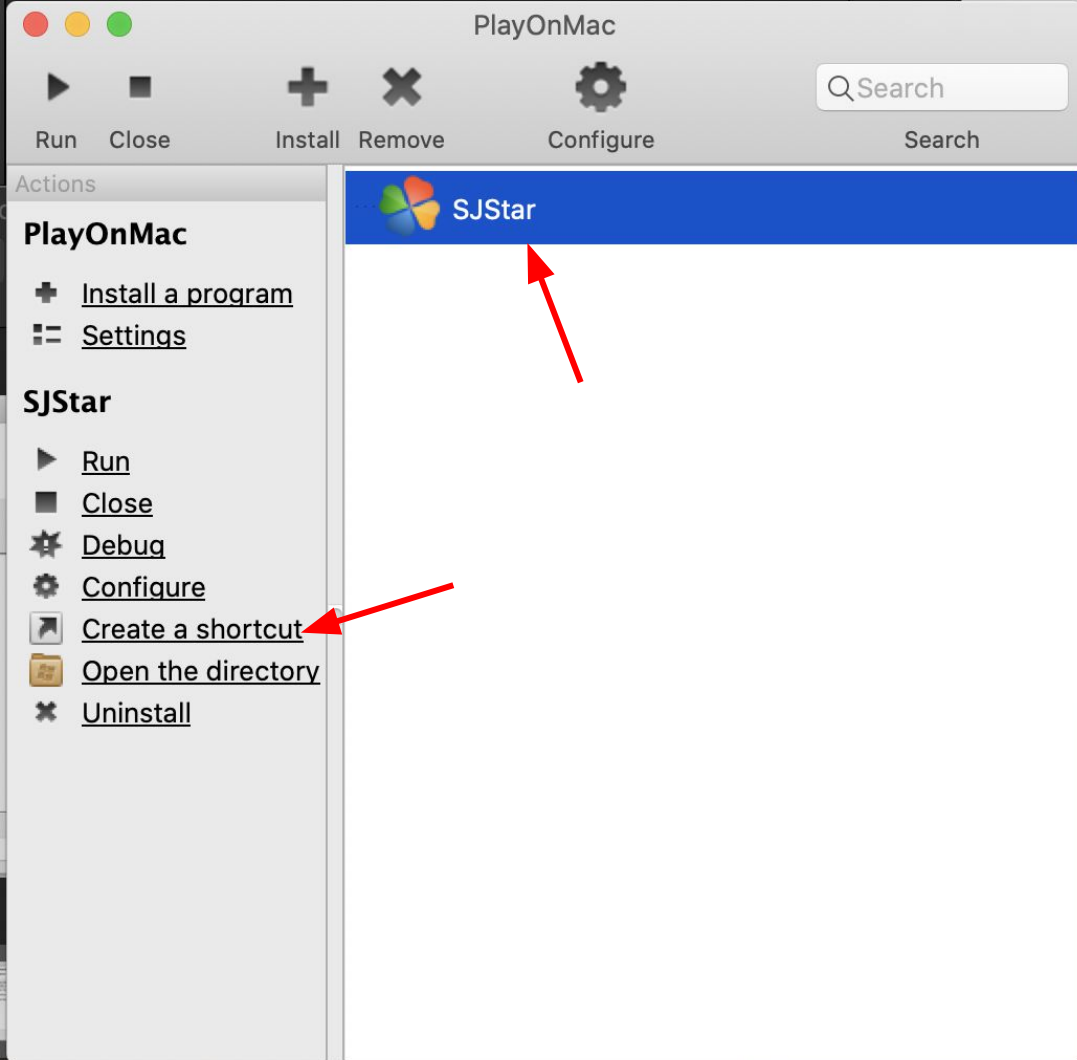
Next >

Cancel

Next

Cancel

1. PlayOnMac is now set up to run Shri Jyoti Star, and the rest of the installation steps proceed as usual.



1. To make it convenient to open Shri Jyoti Star, you can create a shortcut to open the app on your desktop. First, select your virtual drive in the main PlayOnMac window.
2. Then, click “Create a shortcut” on the left-hand sidebar.



1. The shortcut should now appear on your Desktop, and can be used to open Shri Jyoti Star.